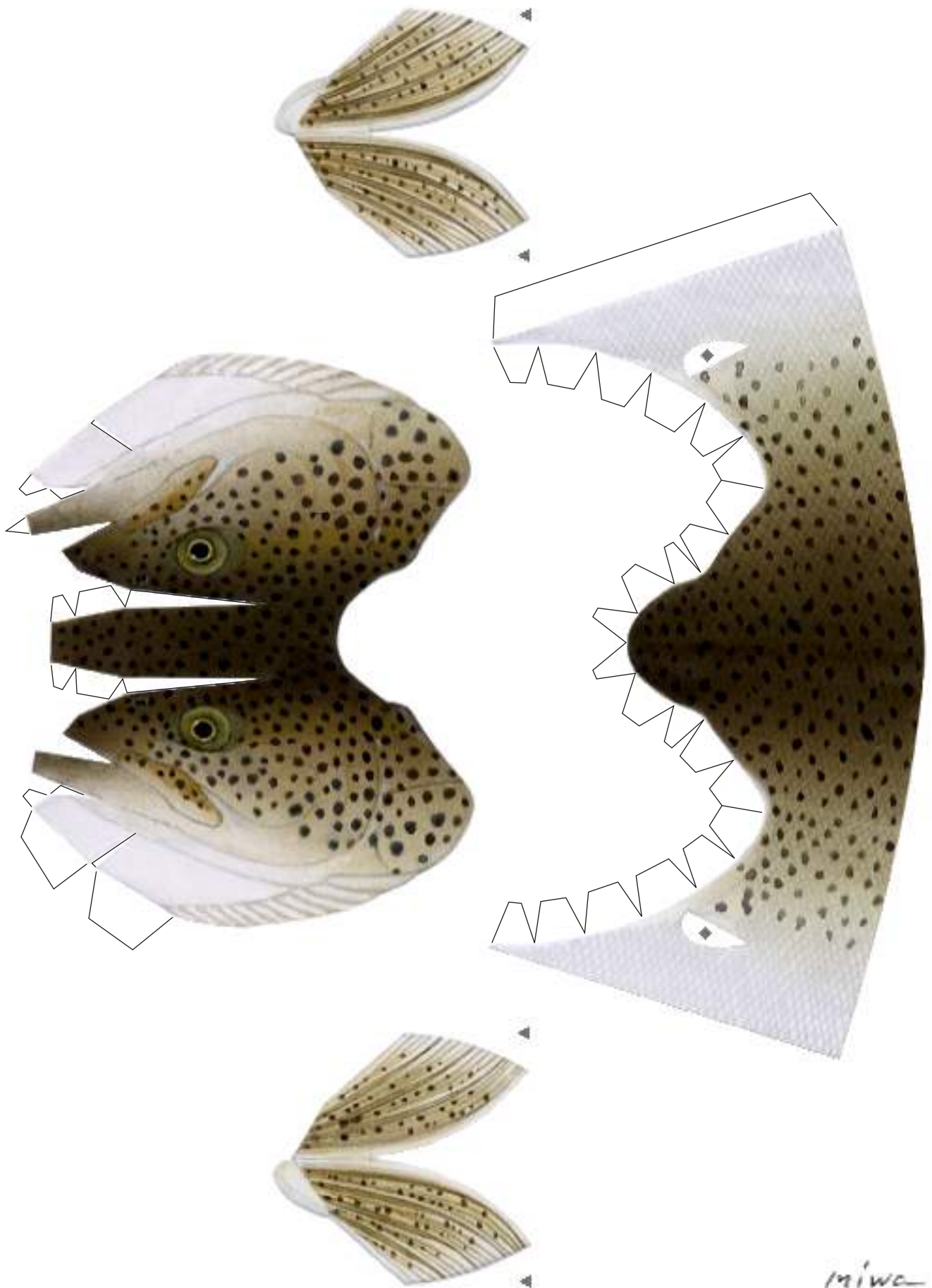
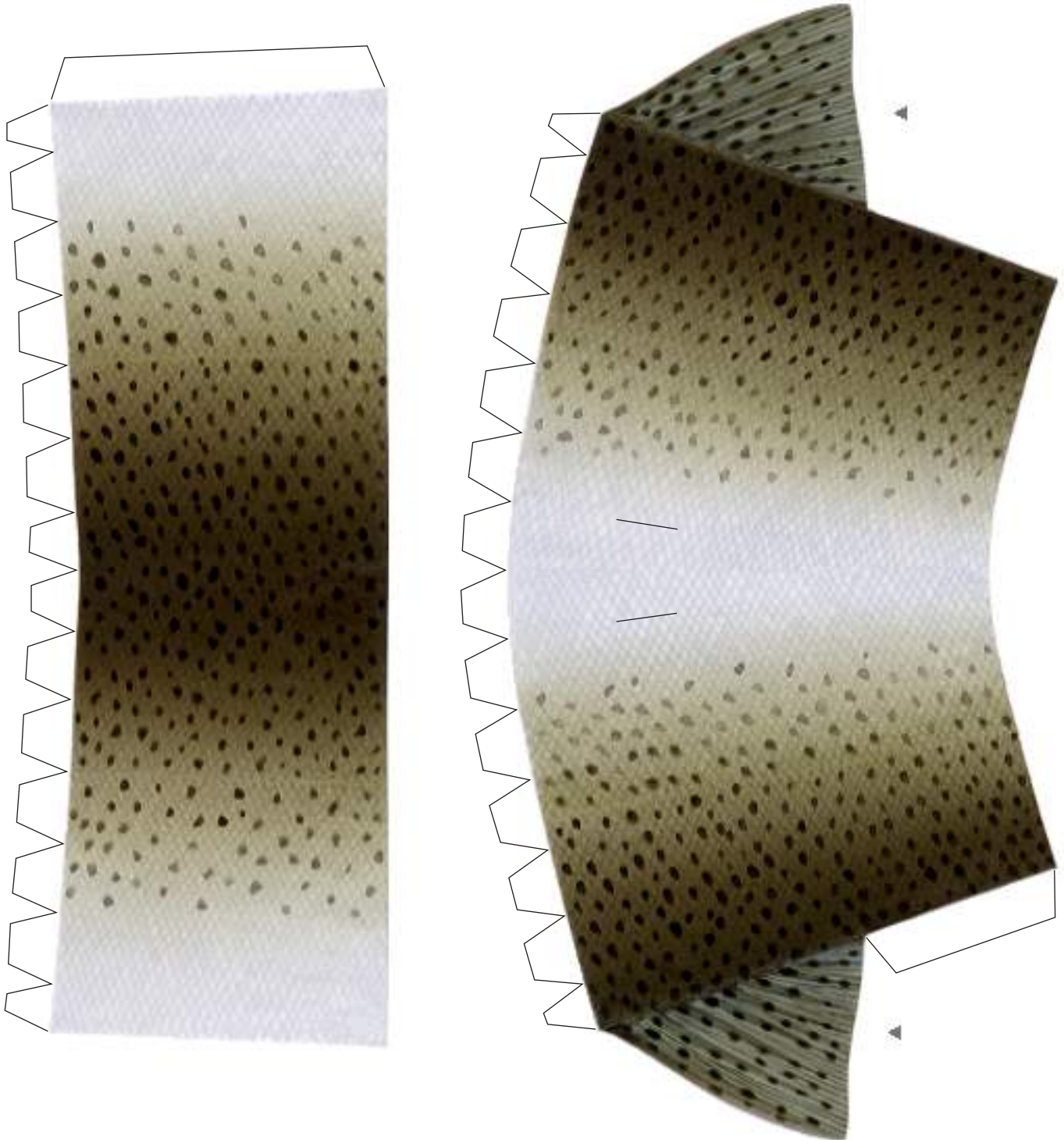


Ito (Japanese huchen ) *Hucho perryi* -1-



Ito (Japanese huchen ) *Hucho perryi* -2-



**Read before assembly.**

Cut out along outer edges, black lines.

- ▲ Glue reverse side.
- ◆ Glue spots. Don't cut out.

miwa

Ito (Japanese huchen ) *Hucho perryi* -3-

